

# Hand-held grinder HSM 6500 vac

## Diamond grinder with ingenious turbine technology

The appeal of this fast, easy-to-handle power tool lies in a number of advantages including the design of its diamond cup wheel. Furthermore, the motor has more than enough power in reserve.

The dust extraction hood is designed in such a way as to allow up-to-the-edge finishing and to accelerate dust extraction.

When used with a suitable industrial dust extractor, the dust which remains on the floor is reduced to a minimum and the tool life of the diamond grinding segments is increased.

The brush ring with special abrasion-resistant bristles can be adjusted to the height of the tool using a quick-release fastener.

- Dust-free, fast work thanks to ingenious turbine technology
- Maxim. speed (6.660 rpm) for both efficient surface removal and the highest possible tool life
- Up-to-the-edge operation
- Supplied in a practical systainer (stackable transport case system)
- Diverse range of tools for various jobs.



### Scope of delivery:

Machine complete with diamond cup wheel vac, dust extraction outlet, assembly tools

**Part no. 023.202**

All supplied in a systainer.

→ +49 7181 929732



ALMOST  
DUST  
FREE

LONG  
LIFE /  
EASY TO  
SERVICE

Simply remove the segment on the brush ring for up-to-the-edge work.

### Technical Data:

Voltage	230 V
Power consumption	2.200 Watt
Speed	6.600 min <sup>-1</sup>
Protection	Class II appliance
Weight	approx. 8,5 kg
Ø Tool	175 mm

**Note:** The machine may only be operated when connected to a suitable industrial dust extractor.



Erwin Früh GmbH  
Machines and accessories for professional floor treatment and sub-floor preparation  
Vorstadtstrasse 61 - 67, D-73614 Schorndorf  
Fon +49 7181 92 97 32, Fax +49 7181 92 97 33  
info@frueh-maschinen.de  
www.frueh-maschinen.de

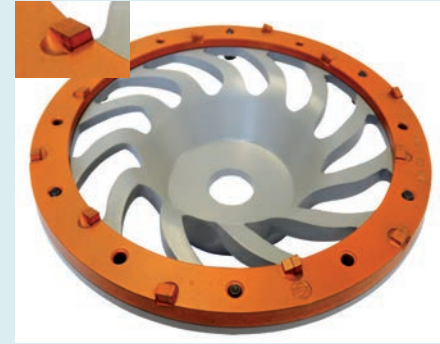
# Tools and accessories HSM 6500 vac



**PCD cup-wheel**  
**DFT-175, BLACK, Part no. 220.400**  
 with 6 PCD-segments, for the removal of all stubborn adhesives (PU, bitumen, synthetic resin, dispersion adhesive, tile and powder adhesive), filler, felt paper, plaster  
**PCD ring** wearing part  
**DFR-175 BLACK, Part no. 220.410**



**PCD cup-wheel SHARP**  
**DFT-175-S, RED, Part no. 220.401**  
 with 6 peaked PCD segments for the removal of fibrous web backing, coatings, thin PVC surfaces  
**PCD ring** wearing part  
**DFR-175 S RED, Part no. 220.411**



**PCD cup-wheel**  
**DFT-175-12 ORANGE, Part no. 223.405**  
 with 12 PCD for the removal of thin layers of adhesive or filler, as well as paint and road markings  
**PCD ring** wearing part  
**DFR-175-12 ORANGE, Part no. 223.413**



**DIAMOND-cup wheel Standard Vac**  
**DT-175-VAC, GOLD, universal**  
**Part no. 223.274**  
 with turbine head technology, for concrete, industrial screed, standard coatings, filler



**DIAMOND-cup wheel Standard Vac**  
**DT-175 VAC, BLUE, special**  
**Part no. 223.264**  
 with turbine head technology, for abrasive sub-flooring such as screed, lime sandstone, non-skid sand coatings, for levelling rough surfaces



**DIAMOND-cup wheel Standard Vac**  
**DT-175-VAC, GREEN, special**  
**Part no. 223.240**  
 with turbine-head technology, for hard screed or concrete



**DIAMOND-cup wheel TURBO GREEN**  
 for extremely hard concrete,  
**DT-175-TURBO-16/20**  
**Part no. 223.241**  
 Grain 16/20 for grinding of extremely hard materials such as screed/ concrete with floor hardeners, natural stone, stoneware  
**DT-175-TURBO-30/40**  
**Part no. 223.242**  
 Grain 30/40 coarse sanding  
**DT-175-TURBO-60/80**  
**Part no. 223.243**  
 Grain 60/80 medium sanding  
**DT-175-TURBO-120/140**  
**Part no. 223.244**  
 Grain 120/140 fine sanding



**DIAMOND-rasping cup wheel**  
**DRT-175, BROWN**  
**Part no. 123.536**  
 for removing thin layers of adhesive, for removing layers of paint, keying and removing coatings, such as acrylic, epoxy, PU etc.  
 No damage of the ground.



**Replacement-brush ring complete**  
**Part no. 323.107**  
**Replacement-brush ring segment**  
**Part no. 323.105**



... the ideal partner for dust extraction: **RONDA** Danish industrial dust extractor approved for dust class H, various models available.

Subject to technical changes without notice. Printed in Germany 01/2021

Erwin Früh GmbH  
 Machines and accessories for professional floor treatment and sub-floor preparation

Vorstadtstrasse 61 - 67, D-73614 Schorndorf  
 Phone +49 7181 92 97 32, Fax +49 7181 92 97 33

info@frueh-maschinen.de  
 www.frueh-maschinen.de

